

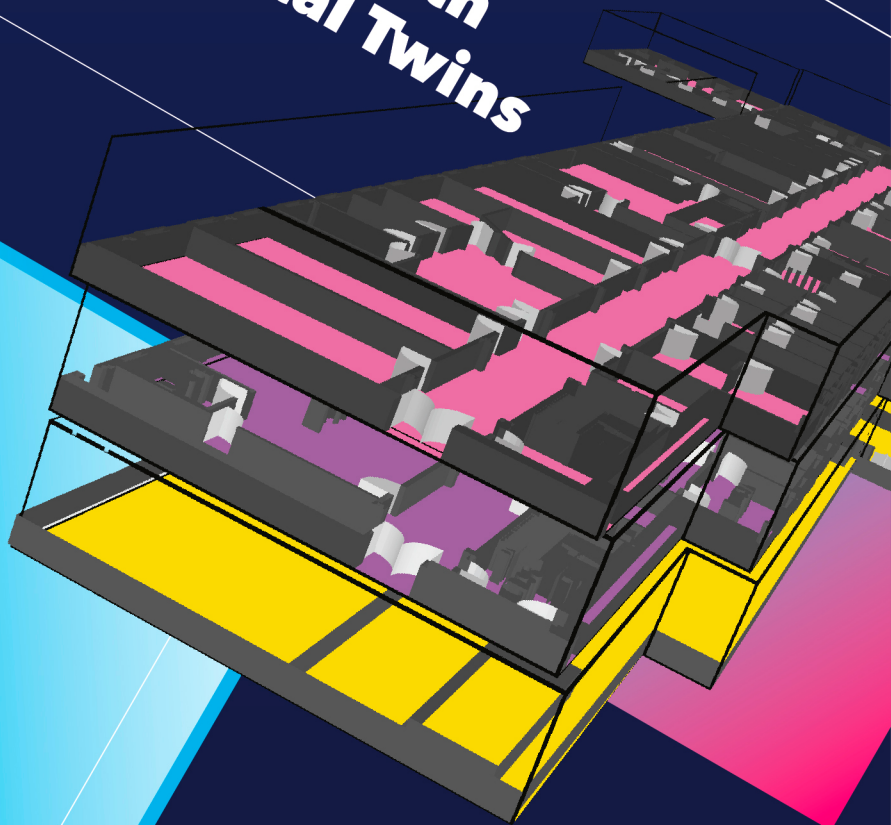
esri
Konferenz

2023

**Empowering
Your World with
GIS & Digital Twins**

29 World
30 Conference
Nov Center
23 Bonn

Sponsoring-Options
for Esri Partners



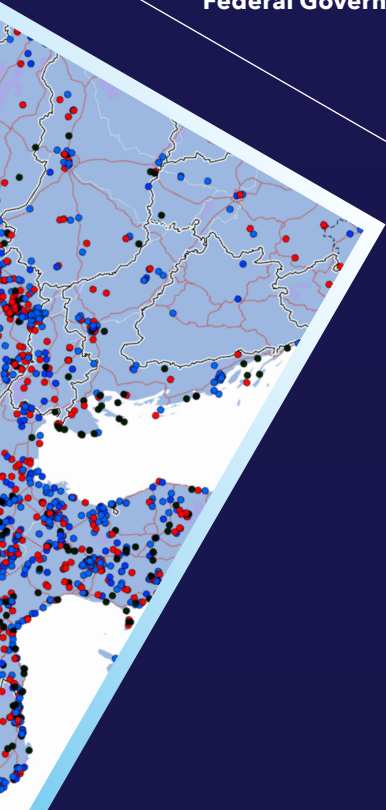
esri Deutschland
THE SCIENCE OF WHERE

Esri Konferenz 2023

Visitor statistics

Get an insight into who visited
the Esri Konferenz 2022.

Verticals



Role



Our Sponsor Packages

Package price (plus VAT)

Start-up*
2,500€

Basic*
7,500€

Advanced*
11,500€

Premium**
20,500€

Conference tickets Including evening event and catering	1	1	3	6
Exhibitor ticket Set-up and dismantling, conference days including evening event and catering	1	1	2	4
Booth package Including branding (logo, text), Wi-Fi, electricity, cleaning, set-up, and dismantling	6m ²	6m ²	12m ²	20m ²
Stations for work/presentation	1	1	2	4
Social media communication package	•	•	•	•
Logo Including a link on the Esri Konferenz website	•	•	•	•
Logo presence at the WCC Bonn	•	•	•	•
Company description on the Esri Konferenz website (up to 100 characters)			•	•
Logo display before Plenary			•	•
Social media post Via the Esri Germany account			•	•
Solution presentation At the Solution Stage			1	2
Front row seats for Plenary (Reserved for days 1 and 2)			5	10
Mentioning of partner at Plenary As a sponsor of the Esri Konferenz				•
Image video before Plenary				•
Editorial article In the digital WhereNext Magazine or ArcGIS Blog				1
Interview with host Daniel Finger Published on social media				1
Meeting Lounge				•

E-Mail: sponsor@esri.de

End of registration period: Tuesday, August 1, 2023

All offers are limited.
First-come, first-served principle applies.

*Up to 1 company per sponsor package / **up to 2 companies per Premium Sponsor Package